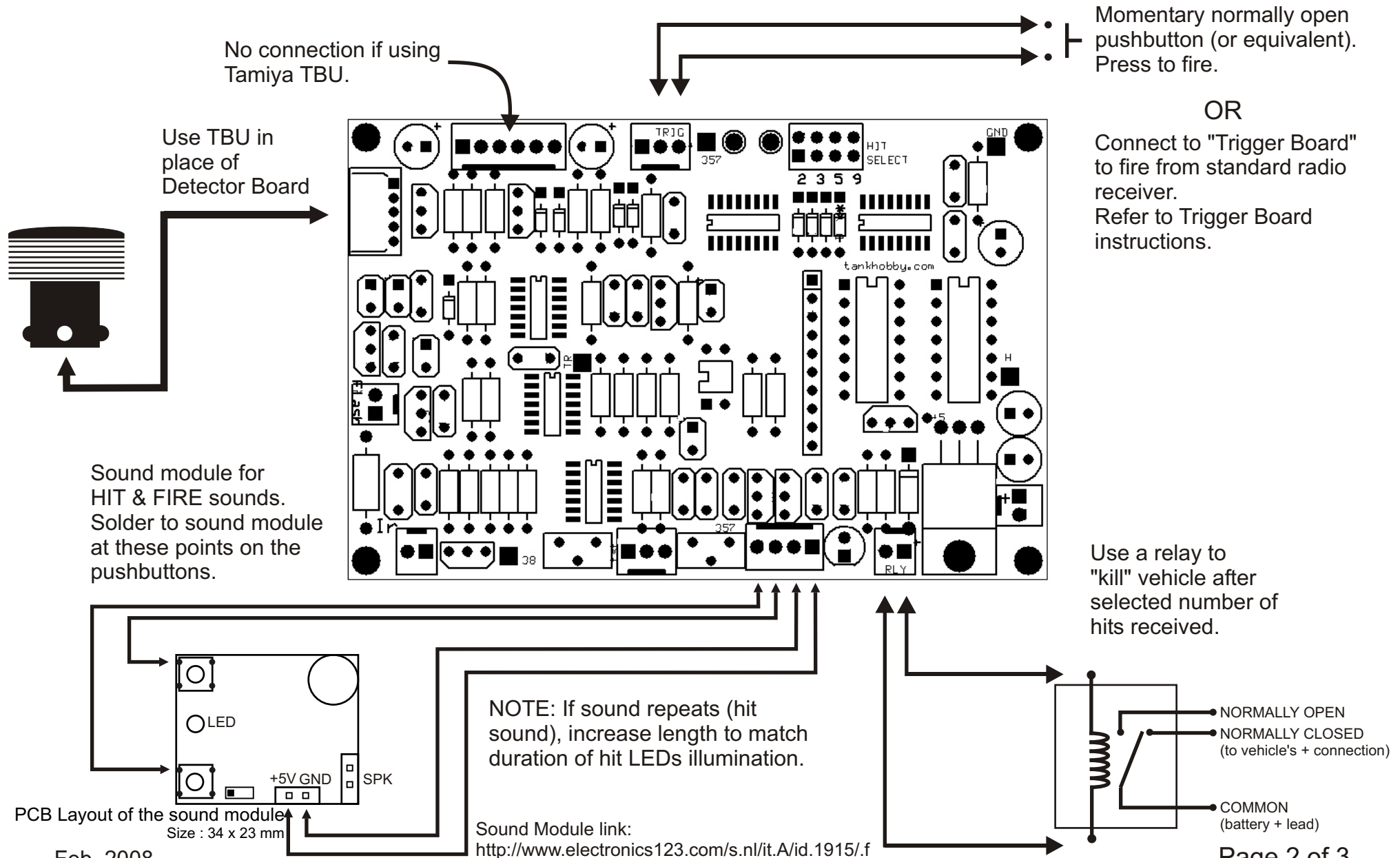
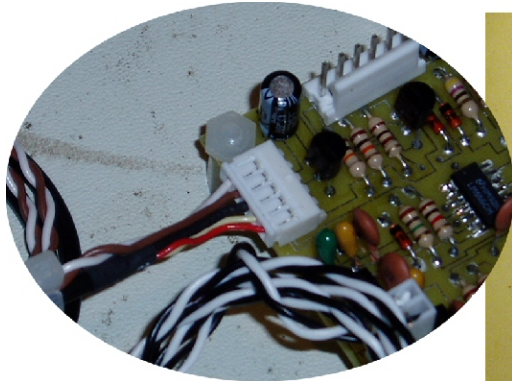


IMPORTANT: Keep board from shorting against metal or other circuit boards. Do not allow board to get wet. Remove power before plugging or unplugging and connections. Board should be secured by standoffs, mounting holes are located in each corner of the board.

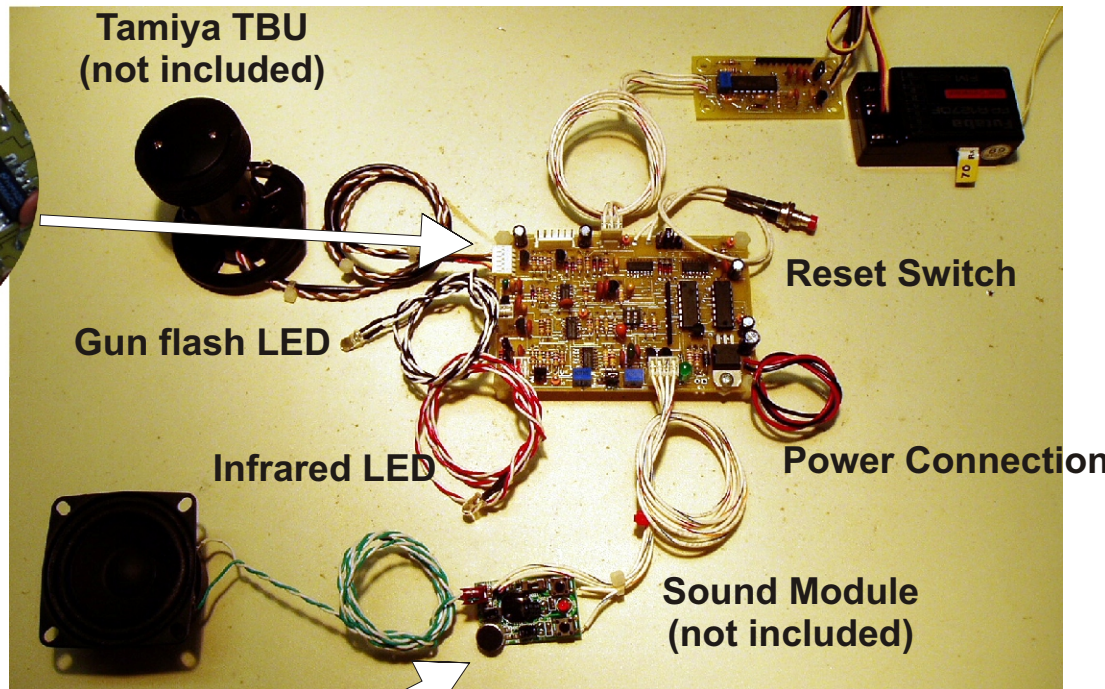


Check polarity
of connector

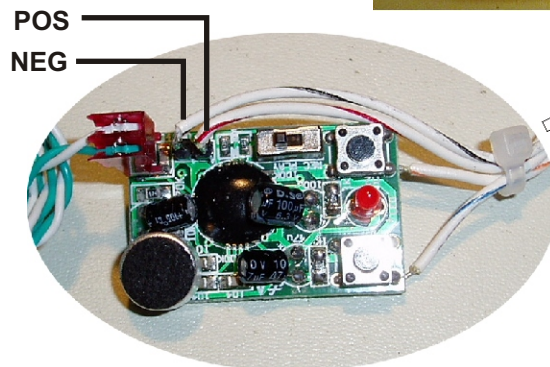


Trigger Board
(not included)

Radio Receiver
(not included)



Speaker
(not included)



Check polarity

Sound Module link:
<http://www.electronics123.com/s.nl/it.A/id.1915/.f>